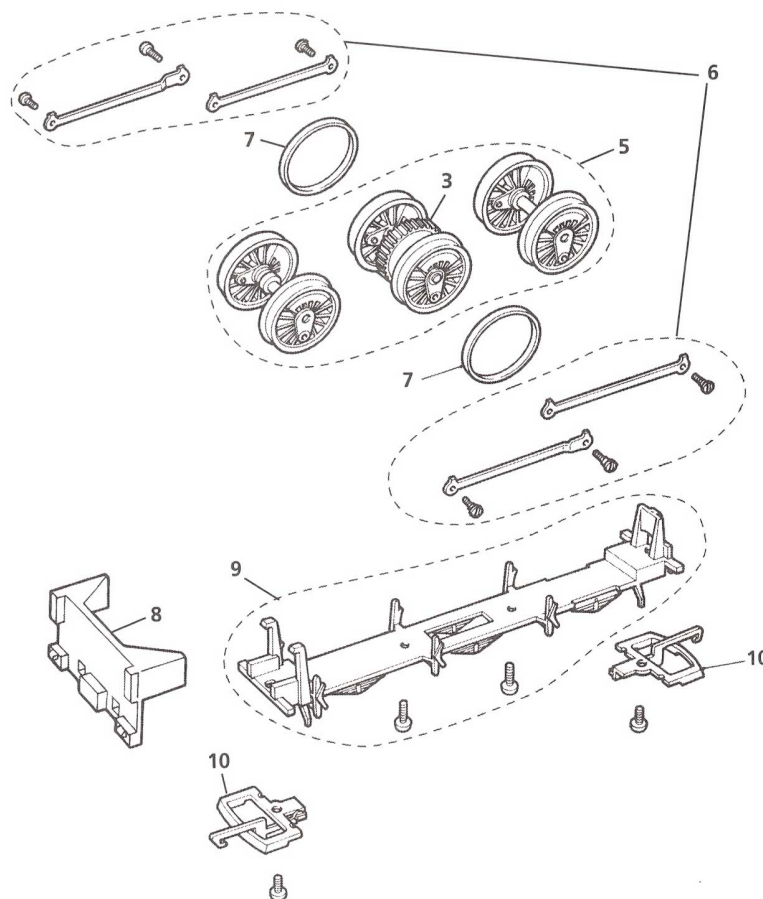
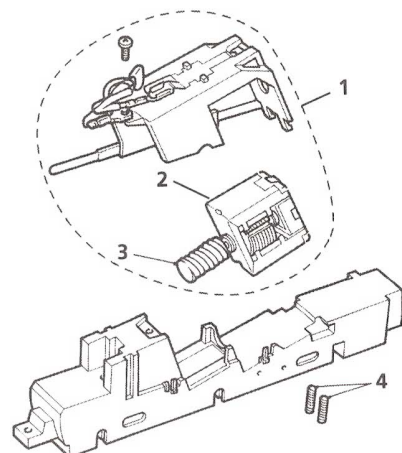


The 0-6-0 Locomotive has had improvements over the past few months, the addition of double pickups has improved slow running over points and Diamond Crossings.

Due to the improvements, the majority of the parts are now not interchangeable with previous models.

If you can see five screws on the bottom of the Locomotive, turn over.

If you can see four screws on the bottom of the Locomotive, please read on.

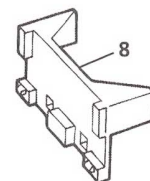


PLEASE NOTE

The 0-6-0 Locomotive chassis is designed to provide a strong hauling locomotive with good electrical pickup and low weight.

A balance has to be achieved between the strength of the coil springs holding the rear driving axle down and the body weights which compress the springs and keep the traction-tyred centre wheels in contact with the track. Therefore, the chassis cannot be performance tested without the body in place.

The spring pressure may be reduced by snipping off one coil from each spring. Pressure can be increased by inserting discs of paper or cardboard, 2mm. in diameter, into the spring location holes before refitting the springs.



LIST OF SPARES

Item No.	Description	Pack	R316	R351	R382/R760 R2006W	R2007W R2008	R760A	R2111	R2123
1	Motor & Retainer Assembly	1	X8200	X8200	X8200	X8200	X8200	X8200	X8200
2	Motor & Worm Assembly	1	X8202	X8202	X8202	X8202	X8202	X8202	X8202
3	Worm & Worm Wheel	1+1	X8199	X8199	X8199	X8199	X8199	X8199	X8199
4	Compression Springs	10	X8114	X8114	X8114	X8114	X8114	X8114	X8114
5	Wheel & Axle Set	set	X8201	X8883	X8203	X8203	X8203B/N1	X8203B/N1	X8203B/N1
6	Coupling Rods & Screws	set	X8198	X8198	X8198	X8204	X8877	X8875	X8876
7	Traction Tyres	10	X8101	X8101	X8101	X8101	X8101	X8101	X8101
8	Body Mounting Clip	1	—	—	—	L5717	—	L5717	L5717
9	Chassis Bottom & Screws	1	X8019	X8019	X8019	X8019	X8019	X8019	X8019
10	Coupling Unit	10	X8031	X8031	X8031	X8031	X8031	X8031	X8031

The 0-6-0 Locomotive has had improvements over the past few months, the addition of double pickups has improved slow running over points and Diamond Crossings.

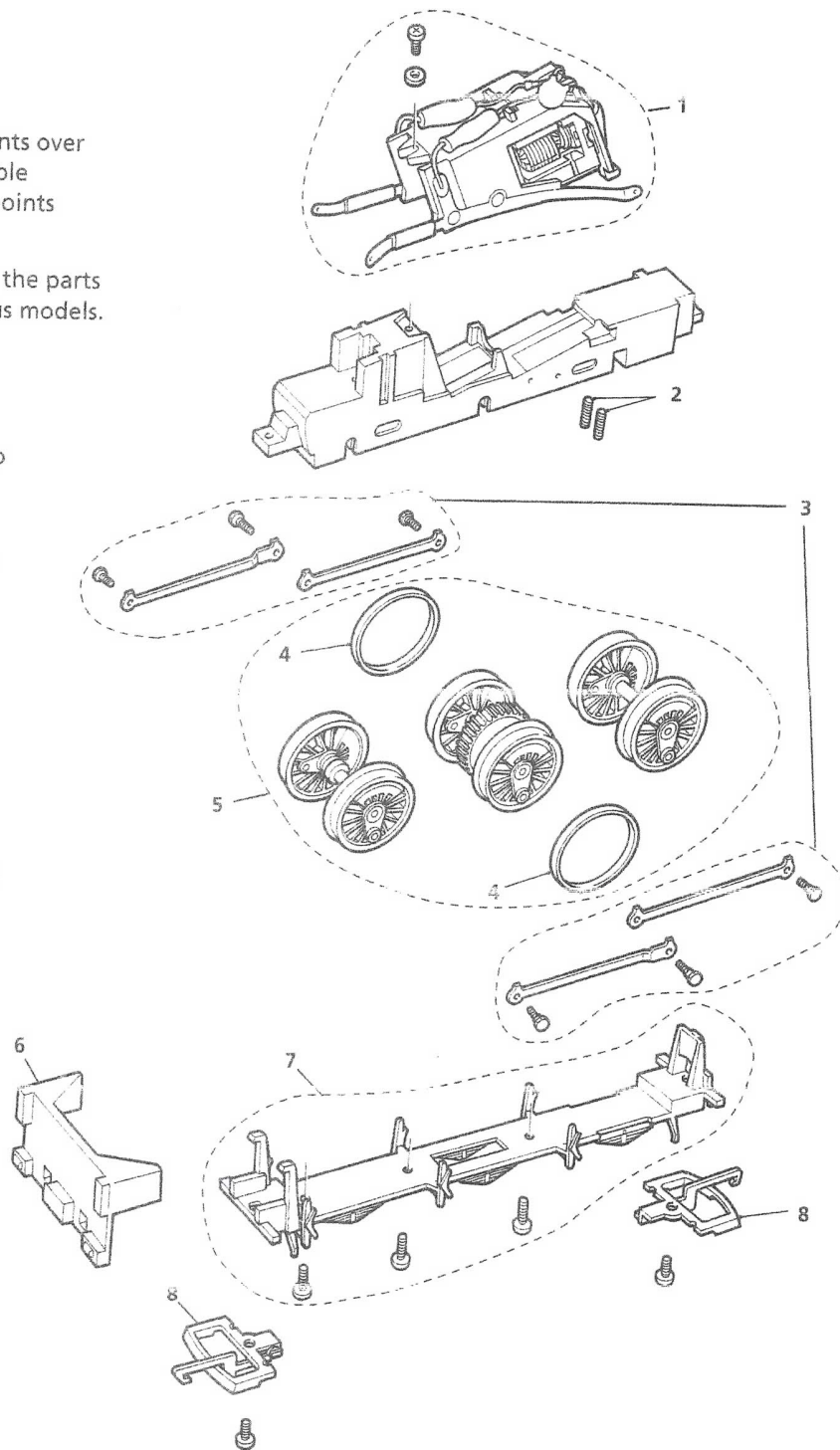
Due to the improvements, the majority of the parts are now not interchangeable with previous models.

PLEASE NOTE

The 0-6-0 Locomotive chassis is designed to provide a strong hauling locomotive with good electrical pickup and low weight.

A balance has to be achieved between the strength of the coil springs holding the rear driving axle down and the body weights which compress the springs and keep the traction-tyred centre wheels in contact with the track. Therefore, the chassis cannot be performance tested without the body in place.

The spring pressure may be reduced by snipping off one coil from each spring. Pressure can be increased by inserting discs of paper or cardboard, 2mm. in diameter, into the spring location holes before refitting the springs.



LIST OF SPARES

Item No.	Description	Pack	R2111 R2163	R2123 R2157A	R2164A/B R2186A/B	R2155A/B R760B/R2006W	R351	R382
1	Motor & Retainer Assembly	1	X8809	X8809	X8809	X8809	X8809	X8809
2	Compression Springs	10	X8114	X8114	X8114	X8114	X8114	X8114
3	Coupling Rods & Screws	set	X8875	X8876	X8877	X8877	X8878	X8878
4	Traction Tyres	10	X8101	X8101	X8101	X8101	X8101	X8101
5	Wheel / Axle Set	set	X8871	X8871	X8872	X8871	X8873	X8874
6	Body Mounting Clip	1	L5717	L5717	-	-	-	-
7	Chassis Bottom & Screws	1	X8019SK	X8019SK	X8019SK	X8019SK	X8019SK	X8019SK
8	Couplings	10	X8031	X8031	X8031	X8031	X8031	X8031
not illustrated	Motor & Worm Assembly	1	X8202	X8202	X8202	X8202	X8202	X8202
not illustrated	Worm & Worm Wheel	1+1	X8199	X8199	X8199	X8199	X8199	X8199